

# SAP EWM seamlessly integrated



## Planning, integration and service from a single source

Shape your digital future with software solutions from Swisslog. The perfect interplay between advanced hardware and intelligent software is the only way to tap the full potential of an intralogistics system. We not only offer our own proprietary Swisslog SynQ software, but we are also a strong partner when it comes to implementing SAP projects. We provide standardized solutions with SAP EWM (Extended Warehouse Management), that meets your business requirements, integrated into your SAP landscape. Thanks to our close partnership with SAP, we are able to work with our customers to create standards-compliant implementations. Considering the importance, that the logistic process comes first.

Swisslog paves the way for fast and smooth material flows, increasing productivity and decreasing costs in your warehouses and distribution centers. Swisslog collaborates with you to design the best possible overall solution based on our blue prints and templates. As an intralogistics pioneer, we also make it possible for you to leverage IT megatrends within your complete SAP system.

SAP EWM, the strategic warehouse management system from SAP, has features that allow us to map everything from simple to highly complex logistics processes, like flexible modeling and optimization of your warehouse and its processes or greater inventory and process transparency. Moreover, picking path optimization, multi-client capabilities and seamless technology integration (RF, RFID, etc.) is possible. We focus on seamless integration without additional 3rd party software.

## Benefits

### Integrability

Our software expertise ensures seamless connection to your SAP system, designed to fulfill your standard. Everything from a single source: seamless interplay between hardware and SAP EWM.

### Long-term experience

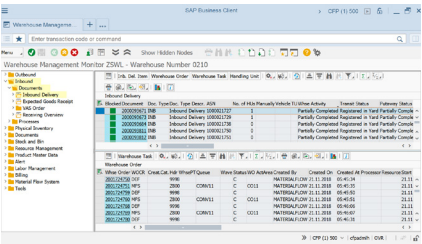
Swisslog, your proven SAP partner, provides a team of SAP experts with many years of experience across industries. From strategic advisory and program support until design & professional implementation by our experts ensures a successful project completion.

### Customer support

Our customer support accompanies you during operation and for extensions and improvements. We offer a 24/7 hotline to support customers worldwide, including second and third level support with focus on automation.

# SAP solutions from Swisslog

## Material flow system, connectivity & Interface



## Material handling

The key component of a warehouse automation solution is the material flow system (SAP EWM MFS), which is hierarchically situated between the higher-level warehouse management system (SAP EWM) and the lower-level programmable logic controllers (PLC) in the devices. The MFS controls your entire flow of materials across all automation components. It offers control station features for managing, coordinating, monitoring and controlling resources, as well as transporting for replenishments for picking.

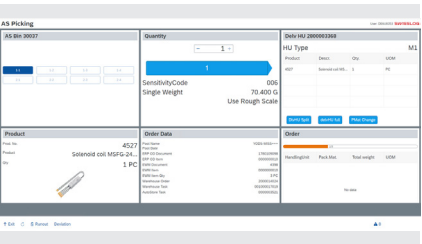
## Real-time connectivity

The material flow system from SAP (SAP EWM MFS) supports real-time direct connectivity to your automated warehouse technology. It establishes bi-directional data transfers to the programmable logic controllers via communication channels. The result is a built-in two-way control mode that helps you correct errors quickly and ensure a smooth flow of materials.

## Interfaces

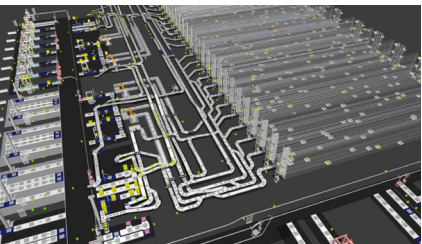
As an enhancement to the SAP EWM MFS standard, Swisslog offers an optional MFS package, which acts as a link between the SAP and Swisslog worlds. This package implements the Swisslog Interface Standard (SIS) and is tailored specifically to Swisslog- products.

## Intuitive user guidance & Visualization



## Intuitive user guidance

All SAP solutions from Swisslog focus not only on smooth material flow but also on easy, intuitive and reliable user guidance during operation. For this purpose, all screens are consistent with the Swisslog look and feel, while the dialogs are based on SAP technologies. With information reduced to the essentials, any logistics employee should be able to begin using the system productively within a very short period of time.



## 3D Visualization

We deliver additional transparency and visibility to SAP EWM with our optional 3D Visualization. This powerful tool delivers real-time information for every automation process to an 3D Dashboard together with status management of the material flow. Your control tower will be enhanced with all operational real time informations in an fast and easy visualized overview.

## Portfolio



## Comprehensive Portfolio

Swisslog offers a comprehensive portfolio of services for integrating SAP solutions:

- Proof of concept
- Prototyping
- SAP Business Blueprint (test management)
- Project planning and management
- SAP rollout, including fit and gap analyses
- Iterative project execution
- Rapid deployment solutions
- Process automation and material flow control
- Application support
- Template creation
- Interface design and implementation
- Intuitive and ergonomic visualization (user dialogs)
- Documentation and training
- General logistics and IT consulting
- Stratetic advisory and program support

## Facts

SAP migration  
(for existing and new customers)

WM → EWM    SynQ → EWM

Swisslog Legacy Solutions  
(for existing customers)

ProLVS → EWM    WM30, WMX, WM6 → EWM    Replacement with SAP EWM



# SWISSELOG