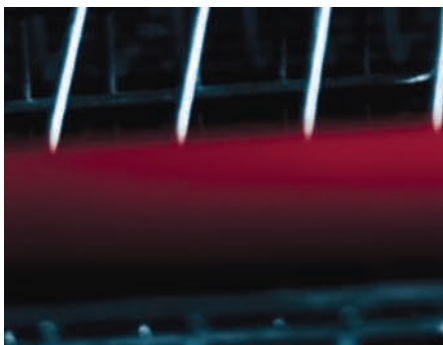




SWISSLOG'S LOGISTICS  
INDUSTRY EXPERTISE



RETAIL



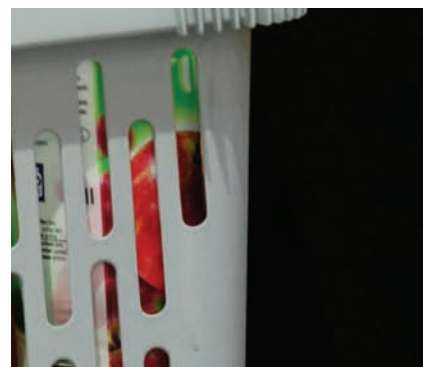
swisslog

# EVERYTHING YOU REALLY NEED IN LOGISTICS: THE INDUSTRY EXPERTISE OF SWISSLOG

CONTINUOUS FLOW  
AND MAXIMUM  
AVAILABILITY WHILE  
LOWERING LOGISTICS  
COSTS.



- 03 Industry Segment Management
- 04 Industry Solutions from Swisslog
- 05 Retail Industry Expertise
- 06 Industry Solution PalletRunner
- 07 Industry Solution CaddyPick®
- 08 Industry Solution ZoneRunner
- 09 Proven Experience



## RETAIL INDUSTRY SEGMENT MANAGEMENT

The Retail Industry Segment Management (ISM) monitors trends in various sectors for which Swisslog is able to create logistics solutions, from the early consulting phase to implementation and customer support.

### Retail

The retail industry is facing large challenges, which is also reflected in its logistics requirements. Not only consumers' hybrid buying behavior and an ever-aging society, but also new regulations affect the retail business.

Internal factors as well as frequent personnel turnover, longer store opening times and rapid product assortment changes, require new solutions.

Our expertise is founded upon the knowledge of our professionals, gained through the successful completion and operation of logistics solutions for manufacturing, automated warehouses and distribution centers worldwide. Our goal is to help customers achieve perfect distribution management, a continuous flow of materials and maximum availability while increasing quality and lowering logistics costs.

### ISM Retail

Swisslog keeps a market-focused perspective by means of its Industry Segment Management (ISM). The ISMs watch market trends closely to be able to develop logistics solutions that are suited to specific industry sectors.

The ISMs operate on a global basis for all Swisslog companies. Their role is to be a "center of excellence", a forum of our most experienced employees with specific industry know-how. They gather experience from the practical application of system solutions, analyze the information obtained and make it available to all Swisslog companies throughout the world. Of course, all of our customers reap the benefits, too.

# INDUSTRY SOLUTIONS



**INDUSTRY SOLUTIONS  
FROM SWISSLOG:  
MODULAR, FLEXIBLE  
AND EFFICIENT**

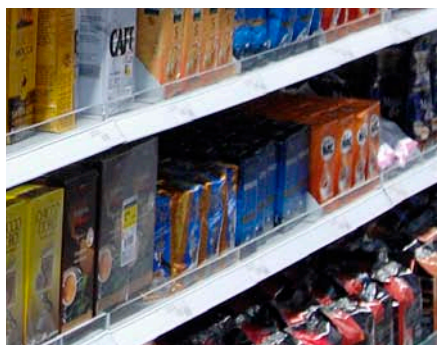




The main Swisslog components for the implementation phase are our Industry Solutions. Utilizing equipment like automatic transport systems, storage systems, case-picking systems, robotic order-picking systems, sorting systems and automatic vehicle loading and unloading systems, Swisslog can meet all specific logistics requirements.



These components are linked together with our integrated Warehouse Management System and monitored via our Single Point of Control visualization system.



# INDUSTRY SOLUTION

## PalletRunner



01

PalletRunner is a semiautomated case order-picking system.

Swisslog customers such as Arla Foods Sweden, Best Foods Germany, Walkers Crisp United Kingdom, ASKO Norway, IKEA Sweden and large retailers in North America have all chosen the PalletRunner as their preferred solution.

01 PalletRunner, Arla Foods, Sweden  
02 Generic PalletRunner Solution



02

This solution automates the pallet flow from receiving to the storage location and then into the pick face. Cases are manually picked via voice direction to an order pallet on a pick vehicle. The pick faces are integrated into a rack structure. Automated storage and retrieval machines replenish the pick faces, which hold a buffer of 2 pallets.

Following the man-to-goods principle, the picking occurs on multiple pick levels. The finished order pallets are stretch wrapped automatically and transported to the shipping dock area via a conveyor system.

The pick faces can be configured in many different ways. The configuration can be changed with changing operational requirements.

Pick face configurations are:

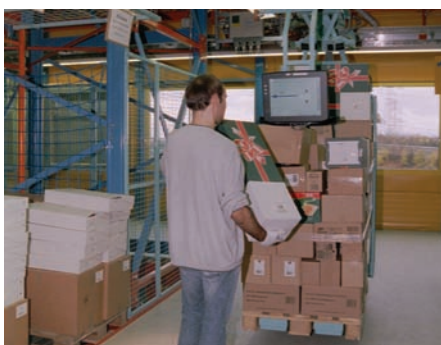
- 1-tier / tall loads
- 2-tier / half-high loads
- 3-tier / one layer on a tray
- Dynamic slots

### Benefits

- > Streamlined and more efficient processes due to automated hauling, putaway and replenishment functions
- > Multilevel order filling allows a reduction in building footprint
- > Increased order filler productivity due to
  - voice picking
  - avoidance of congestion with replenishment drivers
- > Accurate and highly visible inventory information
- > Higher order fulfillment rates due to double-deep pick slots and short replenishment cycles

# INDUSTRY SOLUTION

CADDYPICK®



01

CaddyPick® is a semiautomated case order-picking system.

The CaddyPick® has proven to be a versatile and effective material handling solution for retailers in Europe (e.g. dm-drogerie markt Germany, Denner Switzerland) and in North America.

01 Picker completing an order  
02 Generic CaddyPick® Solution



02

In addition to the PalletRunner solution the CaddyPick® solution contains a subsystem to support the order filling function. CaddyPick® is a combination of two order fulfillment principles: man-to-goods and zone-to-zone picking.

When the order starts, monorail vehicles carry the order pallets to the first picking location. Then they move to all required locations and with the use of light technology identify the pick location to the order filler. A display shows the amount to be picked. Weight scales on the vehicle monitor the picked quantity.

When an order pallet is completed, the vehicles transport the finished loads to the stretch wrap machines. A conveyor subsystem transports the loaded pallets to the shipping docks.

The vehicles continue on to the order start point where they automatically load a new, empty pallet for the next order.

## Benefits

- > Streamlined and more efficient processes due to automated hauling, putaway and replenishment function
- > Significant improvement of order filler performance due to automating the order start and order finish functions
- > Team approach to the picking function increases system performance additionally
- > Error-free picking through weight monitoring and easy pick dialogues on the pick displays
- > Quiet working environment in a palletjack-free working environment

## INDUSTRY SOLUTION

## ZoneRunner

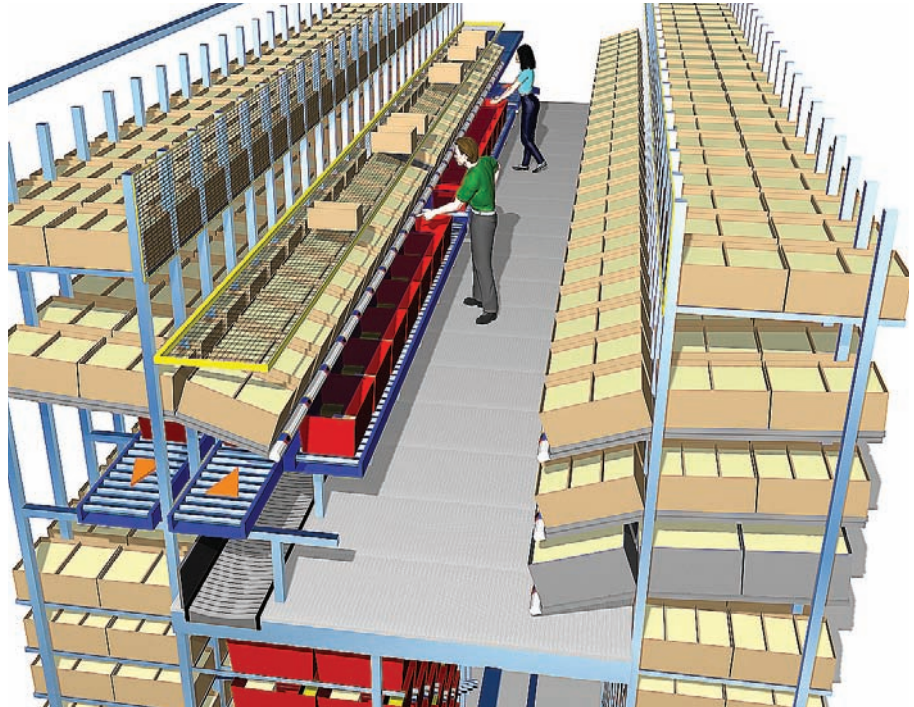


01

## ZoneRunner is a semiautomated piece-pick solution.

The ZoneRunner is implemented at Swisslog customers such as Actebis Germany, Pets at Home United Kingdom, Stadium Sweden, Bristan United Kingdom, Forlagsentralen Norway and Haiyan China.

01 ZoneRunner Solution for a large retailer in the textile industry  
02 Generic ZoneRunner Solution



02

The ZoneRunner is a man-to-goods solution. The solution allows for the presentation of several thousand products in static or dynamic pick locations.

The various SKUs come in totes or cartons. The replenishment function is either manual or automated with a miniload stacker crane. The picking occurs ergonomically from multilevel pick faces. Order totes move from zone-to-zone on a conveyor system, stopping at zones as necessary to complete the order. The order totes either move along one side of the pick aisle within the pick faces or down the middle of the pick aisle.

The zones can be staffed flexibly depending on the day's demand. The solution can handle a large number of orders at the same time. Once the order totes contain all products, the totes are either sent to packaging stations or directly to a sorter. A sequencer can generate an exact tote sequence for manual or automated stacking of the totes onto a transportation unit.

### Benefits

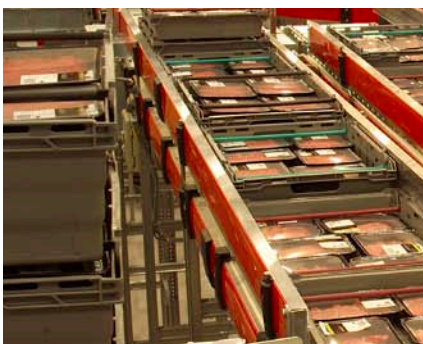
- > High order filler performance (or picking performance) because of short walking distances and ergonomic picking stations
- > Reduced building footprint due to multilevel picking
- > Reduced labor force due to an automated transportation system and miniloads for putaway and replenishment
- > High flexibility for changes in demand
- > High pick accuracy is accomplished through pick-by-voice or pick-by-light solutions

## PROVEN EXPERIENCE

Swisslog is committed to improving clients' logistics through smart material flow planning using proven technology for both manual processes and integrated automation.

Swisslog has already proven its technology at:

- > Actebis, Distribution center for the extensive computer business, Germany
- > biG Logistica, Center with Dairy and Meat products for Danone and Galbani, Italy
- > Billa, Distribution center for dry grocery, Austria
- > Target Corporation, United States of America
- > Club 8 Company, Distribution center for furniture products, Sweden
- > dm-drogerie markt, Distribution center for health & beauty products, Germany
- > Forlagscentralen, High-bay warehouse, Norway
- > Genossenschaft Migros Ostschweiz, Order picking system for Fruit & Vegetables, Switzerland
- > Grattan, Distribution center for mail orders, United Kingdom
- > Haiyan, Distribution center for tobacco, wine, sugar, Shanghai / China
- > ICA Sverige AB, Distribution center for packed meat, Sweden
- > Neckerman, Distribution center for mail orders, Netherlands
- > Wal-Mart Stores Inc., United States of America
- > Nestlé, Semi-automated coffee sleeves and accessories picking, Switzerland
- > Otto-Versand, Distribution center for mail orders, Germany
- > Pets at Home, Distribution center for food & equipment for pets, United Kingdom
- > Woolworths Supermarkets, Distribution centers for Sydney and Melbourne, Australia
- > Rewe Dortmund, Freezer distribution center, Germany
- > Salvesen Cavalieri Logistica, Distribution center, Italy



# SWISSLOG PLANS, BUILDS, DELIVERS, INTEGRATES & SERVES ALL YOUR LOGISTICS NEEDS



## WHY WAREHOUSE & DISTRIBUTION SOLUTIONS FROM SWISSLOG?

- > From manual to automated solutions – designed to grow
- > Industry expertise – we understand your business
- > Consult, design, deliver, and operate – guaranteed results
- > Lifetime partnership to maximize your investment
- > Global presence – local service and support



Swisslog provides services, solutions and products for warehouses & distribution centers such as:

- > Consulting & design incl. studies
- > Systems implementation & integration
- > Civil engineering & project management
- > General contracting
- > Software solutions
- > Material handling products
- > Customer support



[www.swisslog.com](http://www.swisslog.com)



**swisslog**