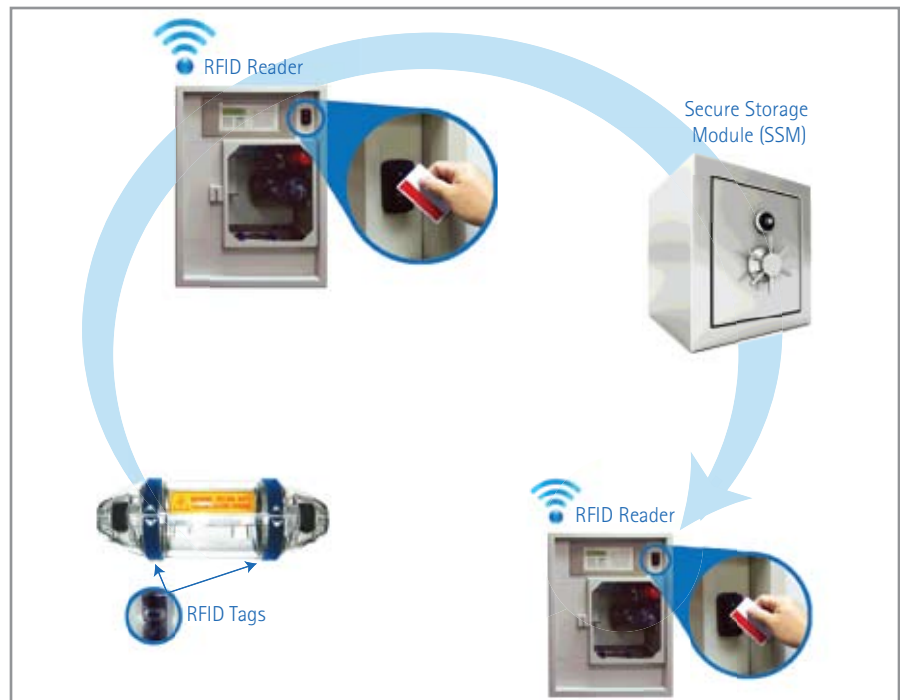


SWISSLOG SPECIAL APPLICATIONS

CHAIN OF CUSTODY



Chain of Custody provides pneumatic tube system users security using WhoTube™ card access technology, tracking sender and receiver information, RFID carrier departure and arrival confirmations, as well as Alert Messaging notification.

Due to ongoing improvement programs, Swisslog reserves the right of production or design change without notice or obligation.

Secure Exchange

The sender will be identified by swiping their facility access card on the WhoTube card reader mounted at the pneumatic tube system station.

The carrier is uniquely identified by an RFID tag, which is read upon dispatch at the station and then again on arrival at the receiving station.

The arriving carrier is held in a strategically located Secure Storage Module (SSM) and notifies the recipient of the arrival via facility communications using Alert Messaging technology. Once the recipient has swiped their access card at the receiving station WhoTube card reader, the SSM releases the carrier ensuring delivery to the proper recipient.

Features & Benefits

- > Complete tracking from carrier dispatch to retrieval
- > Secure access to assigned recipient
- > Supports magnetic stripe, barcode, proximity & smart card technologies
- > Alert Messaging provides notification via pager, PDA, mobile phone, email, walkie-talkie phone and more

Please see WhoTube, RFID, Alert Messaging and the TransLogic Carrier brochures for more information on individual features and system requirements.

For More Information in North America:

Swisslog Healthcare Solutions
Email: healthcare@swisslog.com
USA: (800) 764-0300
Canada: (877) 294-2831 | (905) 629-2400

©2009 Swisslog
CM# PTS-500

WWW.SWISSLOG.COM

swisslog