

## SWISSLOG SPECIFICATIONS

## TRANSLOGIC XPRESS STATION FOR THE PNEUMATIC TUBE SYSTEM



The Xpress Station is designed to achieve the ultimate efficiency in high-volume situations. The station performs the work of multiple stations handling incoming and outgoing carriers in a single compact unit. The separate and independent dispatch and receive ports are capable of handling multiple carriers, while the cushioned receiving bin minimizes impact and sound.

The Xpress Station dispatches a carrier immediately from the station allowing the next carrier to be processed—virtually eliminating dispatch wait time. With separate and independent dispatch and receive ports, the Xpress Station is an effective solution for sending a high volume of carriers.

### Seamless Installation

The Xpress Station provides a clean installation, allowing tubing to be concealed behind walls, laminate enclosures and above ceilings. The Xpress Station is equipped with an I.Q. control panel, which provides digital controls and a programmable keypad offering up to twelve speed-dial addresses.

### Features & Benefits

- > Sends/receives a carrier every 10 seconds, eliminating queued carriers
- > Simultaneously accommodates carrier dispatches and arrivals
- > Reduces dispatch wait times associated with conventional zones
- > Increases productivity and throughput with dedicated inbound/outbound ports
- > Expanded receiving bin accommodates more carriers
- > One station is equivalent to three standard stations - ideal for space constraints
- > Supports up to six Remote Personal Indicators
- > UL Listed

**swisslog**

# TransLogic Xpress Station



## Specifications

### Received Carrier Capacity:\*

- 4-inch 8
- 6-inch 5

\*Station is considered "full"

### Power Requirements:

105 to 125 VAC, 60 Hz, single phase, 5A, unswitched, terminated at station supplied duplex outlet.

### Control Requirements:

Four conductor Plenum-rated cable, #22 AWG stranded, 5 VDC maximum open circuit voltage, 200 mA maximum short circuit current.

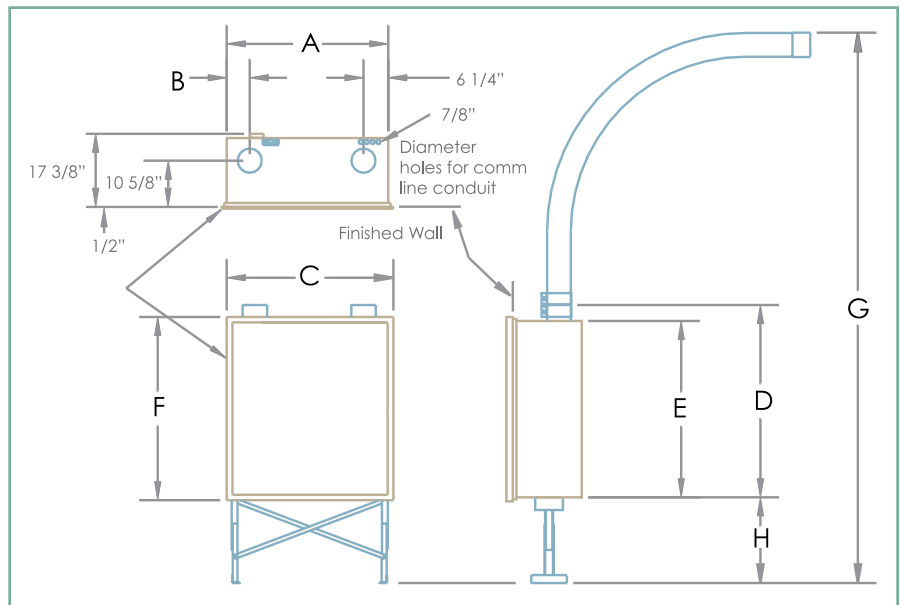
### Operating Environment:

Operation between 0° to 100° F (-18° to 38° C) and relative humidity between 0° to 90°

### Floor Loading:

300 lbs fully loaded (6-inch), 150 lbs. on each of two 2" x 6" foot pads

The Xpress Station is available for both 4-inch and 6-inch systems, and is compatible with all CTS-30 keypads and I.Q. control panels.



Size	Weight	A	B	C	D	E	F	G *	H*
4-inch	260 lbs 118 kg	36 3/8" 92.4 cm	4 7/8" 12.4 cm	38 3/4" 98.5 cm	52" 132 cm	48 1/2" 124 cm	50 3/4" 129 cm	142 1/8" 361 m	17 5/8" 45 cm
6-inch	300 lbs 136 kg	42 1/8" 107 cm	5 7/8" 15 cm	44 3/4" 114 cm	54" 137 cm	50 1/2" 129 cm	52 3/4" 134 cm	140 1/8" 356 cm	15 5/8" 40 cm

\*Standard height may be reduced.

Due to ongoing improvement programs, Swisslog reserves the right of production or design change without notice or obligation.

### For More Information in North America:

Swisslog Healthcare Solutions  
 Email: [healthcare@swisslog.com](mailto:healthcare@swisslog.com)  
 USA: (800) 764-0300  
 Canada: (877) 294-2831 | (905) 629-2400

©2009 Swisslog  
 CM# PTS-213

[WWW.SWISSLOG.COM](http://WWW.SWISSLOG.COM)