

SWISSLOG PALLET TECHNOLOGY

Vectura Stacker crane



Reliable & cost-effective!
Proven technology and continual enhancements make Vectura a top-quality crane able to accommodate a broad range of requirements.

Swisslog's stacker crane Vectura has a modular structure and is designed based on a set of standard components and modules to offer maximum flexibility.

Application area

Wide variety of pallet configurations

- > Single-, double-, triple- and multiple-deep
- > Handling of multiple aisles
- > Handling of gravity-feed roller tracks
- > Special solutions

Typical application range

- > Distribution center
- > Warehouse for production and replenishment
- > Buffer storage
- > Cold and deep freeze stores
- > Modernizations and extensions

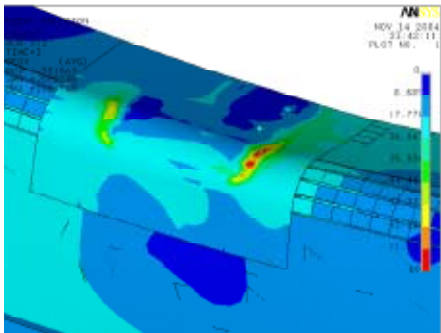
Benefits

- > High quality, reliability and less maintenance due to highly standardized processes and modules
- > Optimized product as mechanics and controls from one source
- > More compact warehouse thanks to dynamic positioning system
- > High space utilization due to optimized crane design
- > Tapered mast construction to minimize weight and lower the point of gravity, resulting in reduced power requirements and improved performance
- > Storage of different pallet sizes within one system
- > Multiple pallet loads at the same time
- > Short installation time and ensured functionality on site due to testing and pre-commissioning in our factory

Vectura - Facts

Load range	300 - 3 000 kg
Heights	6 - 50 m
Throughput	20 - 45 double cycle/h
Speed of operation	up to 4 m/s
Vertical speeds	up to 1.5 m/s
Product range	single and double mast
Storage density	single to multi-deep
Temperature range	from +40 down to -34°C / -30° F

swisslog



Design & Range

In general

- > Compact design
- > Load carried close to mast
- > Emergency cabin along the side of the mast
- > Frame and mast asymmetric to center point of aisle
- > Convenient for access during servicing
- > Stress and deflection analysis of mast and chassis (static and dynamic forces)
- > On-ride camera system, energy recovery (optional)

Mast

- > Standard mast sections across the Vectura stacker crane series
- > Only the top section has to be adjusted for project-specific heights
- > Unique production technology using automated welding robots
- > High production accuracy for frame

Chassis

- > All chassis heat treated after welding to remove residual stresses from the material
- > Length project-specific according to stability requirements
- > Five types of bottom frame with different heights for strength
- > Five wheel sizes in hardened steel, soft wheels for small cranes

Controls

- > The Vectura controls are an integrated part of the Swisslog standard controls concept AutomationControl™

Load Handling Units

Vectura can go single deep to triple deep with full size and weight pallets, and even multi deep is possible. The following load handling units are used:

- > TELESCOPE FORK
for single-deep storage
- > TELESCOPE FORK
for double-deep storage
- > TELESCOPE FORK
for triple-deep storage
- > SATELLITE CAR
for multi-deep storage;
battery powered with WLAN
communication or connected and
controlled via cable

